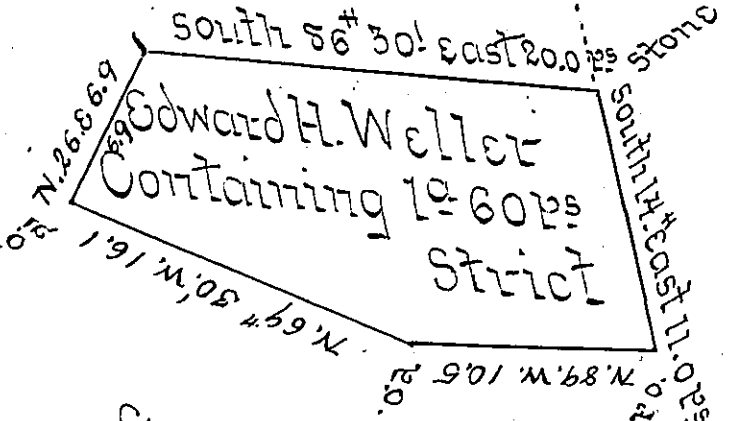


X

George Haines

George Haines



George Haines

Draft of a tract of land situate in Certified Wilkes-Barre Luzerne County Adjoining land surveyed to George Haines on the North East South & West. The above described tract of land was once used as a mill site but long since abandoned. Surveyed the above described tract of land to Edward H. Weller the 20<sup>th</sup> day of October A.D. 1873. in pursuance of his Warrant dated the thirteenth day of October A.D. 1873.

To Hon Robert B. Beath }  
 Surveyor General }

J. P. Weller  
 County Surveyor for  
 Luzerne County

*IN TESTIMONY* that the above is a copy of the original remaining on file in the Department of Internal Affairs of Pennsylvania, made conformably to an Act of Assembly approved the 16th day of February, 1833, I have hereunto set my Hand and caused the Seal of said Department to be affixed at Harrisburg, this sixth day of January 1903.

*James W. Fetter*  
 Secretary of Internal Affairs.